

# Cat Suit

Pattern will fit most 1:6 scale dolls

Designed for the CE Barbie bod, fits the belly button bod really well and CAN be made to fit the TNT bod if you use really stretchy fabric.. **grin** – odds are it'll be a tad loose on the 1:6 bjd's – for 1:4 scale girls, you can enlarge it by 117% - but it may take futzing with, I haven't tried it yet

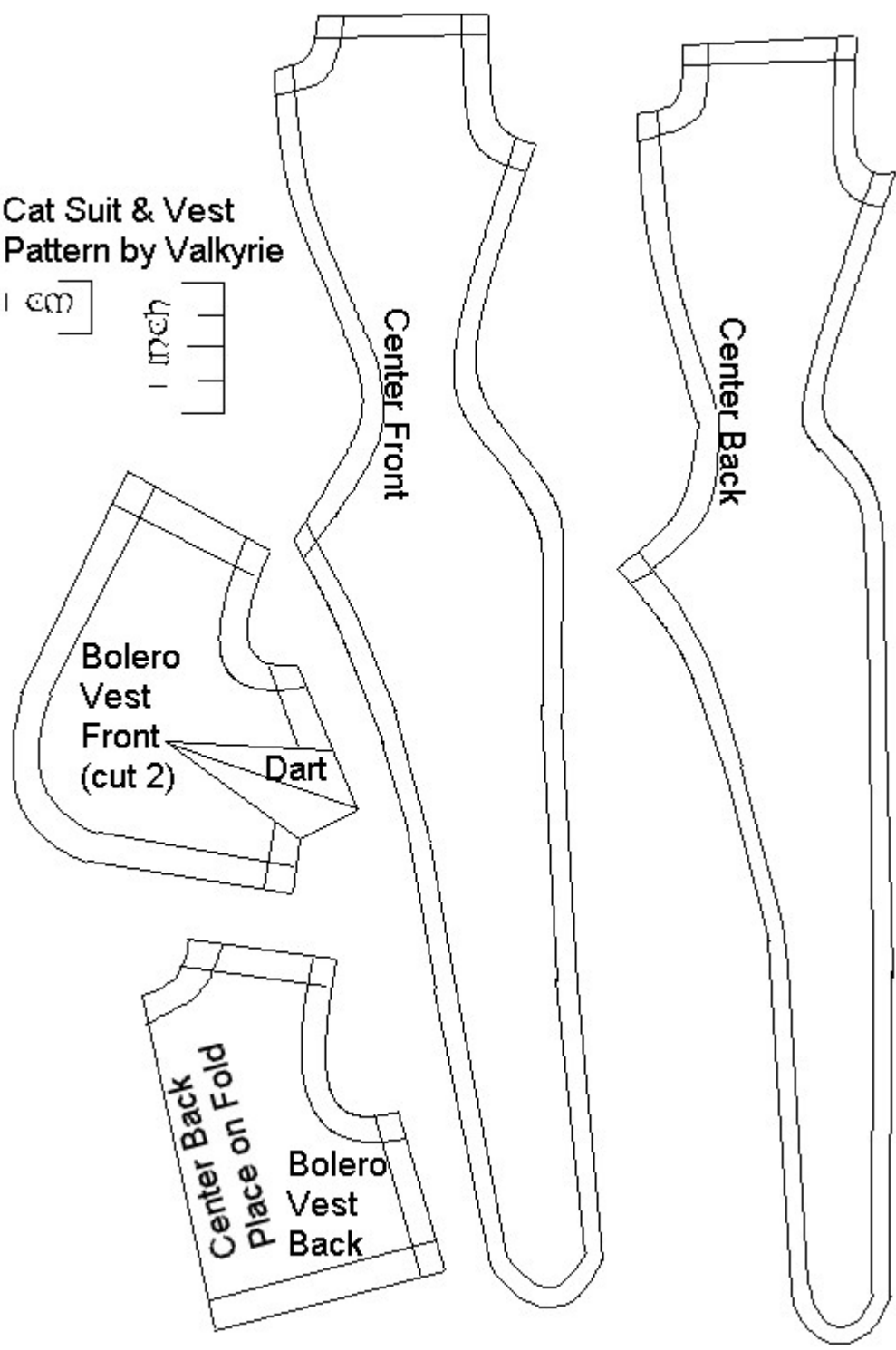
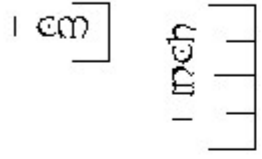
Now then - it's designed to be very... flexible. You can have it lace up the center back (or put in a zipper, or snaps, or whatever you like) - or you can leave it open up the center front - you can give it a plunging V-neck, or add a turtle neck if you want.... the only tricky bit is that you need to decide what you want before you start sewing!

Stretch fabric ONLY (sorry)

It gets sewn...

1. Center back to waist (if it's going to lace up the front, sew the center back to the neck-line)
2. Center front (if you're going to have it lace up the front, only sew the center front to the waist)
3. Shoulder Seams
4. Hem neck and/or attach turtle neck
5. If you want sleeves, now's the time to get them hemmed and put in
6. If you're using a zipper - now's the time.
7. Inner legs
8. Hem Legs
9. Sides
10. Turn it right side out!

Cat Suit & Vest  
Pattern by Valkyrie



\*grin\*

