

Turquoise eye repaint tutorial

Hello, I am Duvet. In this tutorial I am going to show how to re-paint and make a turquoise blue eye, but I'll just show only the coloring, and not the whole eye shading. Let's get started.

Okay, the first thing the colors! The colors you will need are: Ultramarine, Cobalt Blue Hue, Cerulean Blue Hue and Deep Turquoise for the blues. Mars Yellow and Sap Green in order to make the eye pop and add interest to the iris. Of course you will also need black and white.

Ok! First thing.

Outline the iris

With the Ultramarine and make the pupils. As you can see the pupils are not even or completely round but you will see on the next pictures how to correct that.



After you do that, take your Titanium White and draw a something like a white circle around the pupil. Well, nit a circle, but a something like the 3/4 of the pupil ring. Take some more ultramarine and shadow the upper part of the iris, above the pupil, like so. When you are finished with that take some of your deep turquoise.



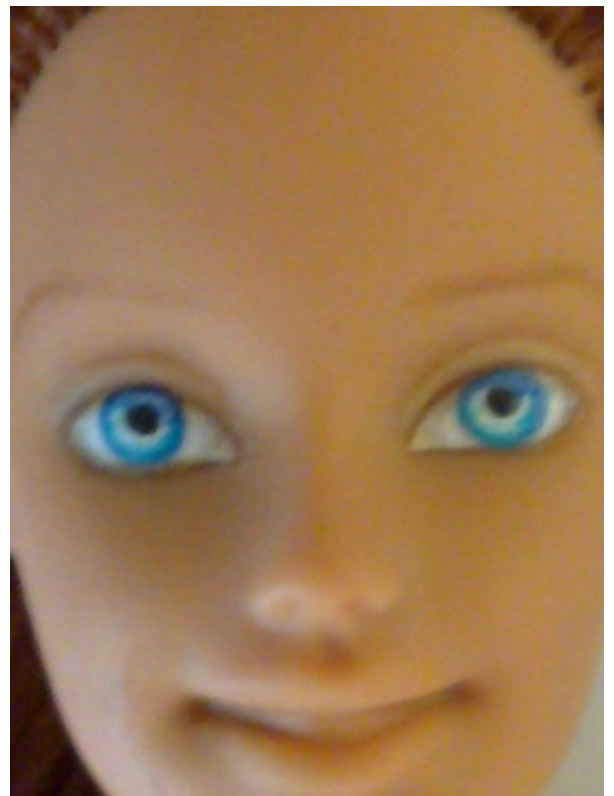
Having your Deep Turquoise star feathering in and out some fine lines from the outer iris ring (it is the Ultramarine blue color). It should look like this. Ok, in the picture they do not look so fine, but I cannot draw and take pictures at the same time, so... Later, when I took the picture I made the lines fine.
:P



Now, take your Cerulean Blue Hue and mix a little bit of that, with some Deep Turquoise. The result should be a medium Turquoise Blue. Take that color and again feather in & out fine lines, just before your previous Deep Turquoise lines end. The doll should look like this. (Okay, this photo is comme merde, but you get the general idea) Now take some Deep Turquoise and some Cobalt Blue Hue and mix these two.



Take this color and feather in some fine line from the middle of your iris ring to the darker are of the iris ring. The darker area is up to you. I, in this doll, wanted the left side of the iris to be darker, so I feathered in fine lines on the left of the doll. Also take some mixing white, it is more semitransparent than the Titanium White, and paint an arch on upper, dark part of the iris. It should look like this. Now take some Ultramarine and some Deep Turquoise, blend them, and add some color in the outline ring, and feather in dome really fine lines on the lightened dark part of the iris. Like so.



Take your Titanium White, and make a white and paint again the previous pupil ring you made, but this time start feathering out, so that the area between your Turquoise blue and the white ring is a little bit expanded, and your blue is a little bit lighter. Like so.



Take some of your Deep Turquoise and some mixing White, and make a light Turquoise. Feather in some fine lines to make the light area a little better like so.



It is about to the end! Some final steps and the eyes are ready!

Take some Mars Yellow and add on it a little bit of water, in order to make a watery color. Or make it have that watercolor consistency. Take this color and paint a very, Very fine line on the white pupil ring you previously made! Like so. As you can see in this picture it is only on the one eye. If you want, you can use another color, like Raw Sienna, or Burned Sienna, or use straight Sap Green!



Now, Take some of your Sap Green, and a little bit of your Mars Yellow, and paint over the pupil ring, or if you want your dolls eyes to have more color leave some of the Mars Yellow, and paint a ring with that mix , and start feathering out, but I am talking about really fine and really small lines. This is the way the doll should look like. If you think that one pupil is smaller than the other one, now it is the time to fix it, just take some black and enlarge her, but do not overdo it.

And now, it is time for the final step. Eye shines! Take your Titanium White, just a tad, and touch the place where you want the eye shine to be. Repeat, until you are satisfied! When you're done, take a little bit of your Mixing White and add some little dots, forming a little line of white, in the lighter area of the iris. And you are done! The dolls eyes should look like this!





And a little tip on placing the pupils. When you will outline for the first time the iris ring, make it thin, and then dip your brush in black, find the middle of your dolls eyes, and make a little dot. Like so. After that, start enlarging the black dots into pupils. I hope this tutorial helped you. Have fun and always remember, practice makes us better.