

Creating a "5-o'clock shadow"

By Valkyrie
Dolls-n-Daggers.com

Assuming, of course, that you're going for 'realistic' and not an artistic expression...

This is prolly the trickiest bit when it comes to painting a male - the 'common' errors I see, are very **very** common, and perpetuated by some very famous repaint artists... but they're still 'errors'. (although, ok, fine, it's hard to argue with a doll that just sold for \$2,000 - but still). Even male artists make them more often than not - which makes no sense to me, but s'true none-the-less.

First, check the hair/skin color. Unless your doll is of heavy Mediterranean/Southern European genetic extraction, he's not going to HAVE an 'actual' five o'clock shadow.

Whether or not he's got a '3-day-beard' is something else entirely - but even so, he won't have a heavy bluish 'shadow' under the stubble.

Yes, pretty much every adult male is slightly darker around the jaw (unless he's just shaved off a beard he had all summer, but I am sooo not gonna go there! **grin**) - but the heavy 'shadow' I see on so many dolls, just isn't there on most real people.

Also, if you're dealing with a 'natural' blond... he's just gonna look like he needs to wash his face until he starts to achieve ACTUAL beard. (trust me, I married one! LOL)

AND, as long as I'm being nit-picky - a guys beard doesn't grow in a straight line, or even a curved solid line - the higher up the face it goes, the more random it gets. Also, mind you, it doesn't grow at an even rate - the actual jawline grows in faster and 'heavier' than the cheeks or under the chin.

SO - does the jawline need to be shaded? - absolutely! - does it need to be blue? nope - does it need to be uniform? - nope.

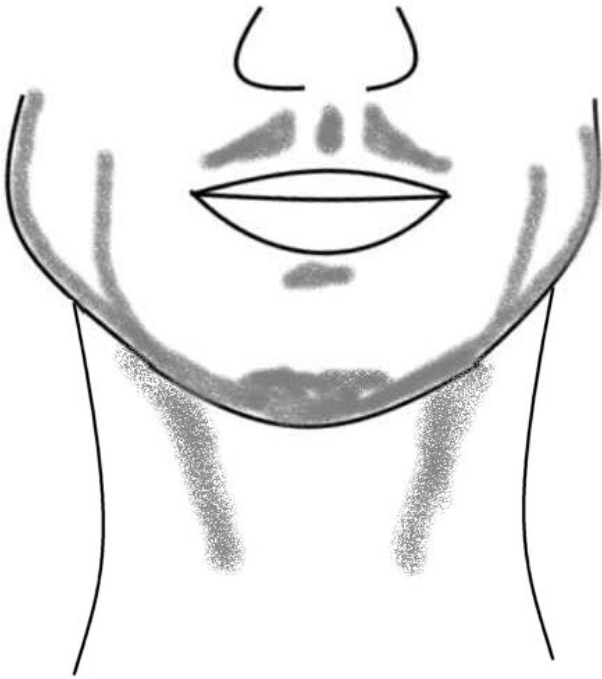
It **does** need to be there, at least subliminally.

With a brunette I'd use a mix of black, burnt Umber and Purple for the shading - with a blonde I'd use a VERY light shading of Burnt Umber and Purple.

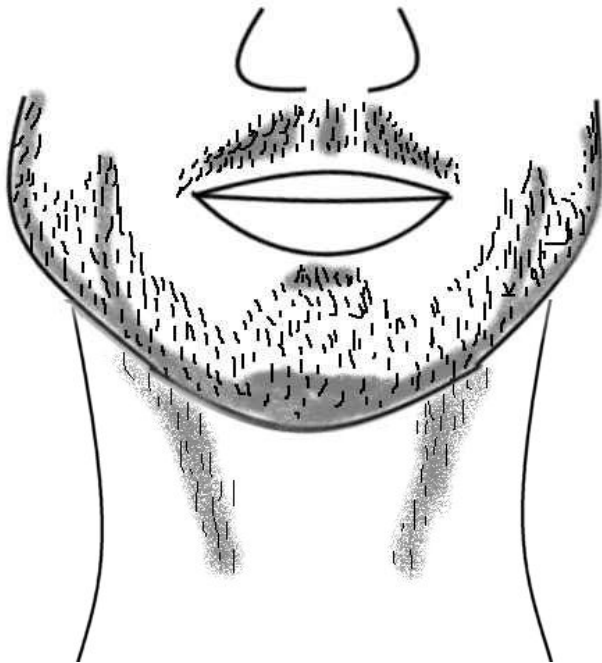
Shading is BEST done **after** the stubble (if you're gonna have stubble) - Stubble should be done in all the shades you've done his eyebrows in, plus the medium shade with a reddish tint added. Shading after the stubble mutes it out nicely, keeps it from jumping out and looking like brush strokes - just all around does good things.

Like so:

Shaded Areas



Hair Growth



Which will give you something like this:



Or, preferably – this!



(no, I don't know who he is, it's a random internet pic – if YOU know who he is... introduce me!!)

Have fun!
Tanya